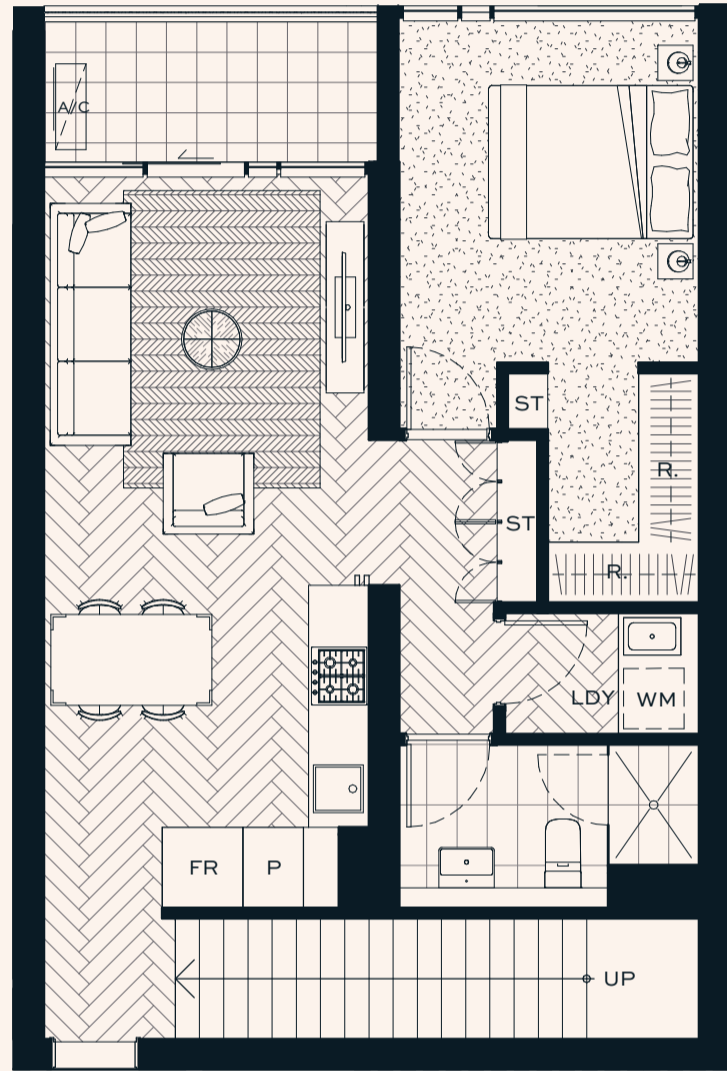


GROUND LEVEL 63.7M<sup>2</sup>



UPPER LEVEL 57.8M<sup>2</sup>

# 1 BED 2 BATH

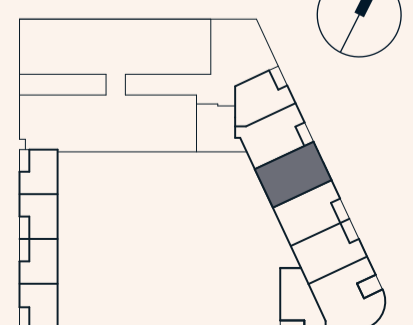
INTERNAL:	121.5M <sup>2</sup>
EXTERNAL:	5.1M <sup>2</sup>
<b>TOTAL:</b>	<b>126.6M<sup>2</sup></b>

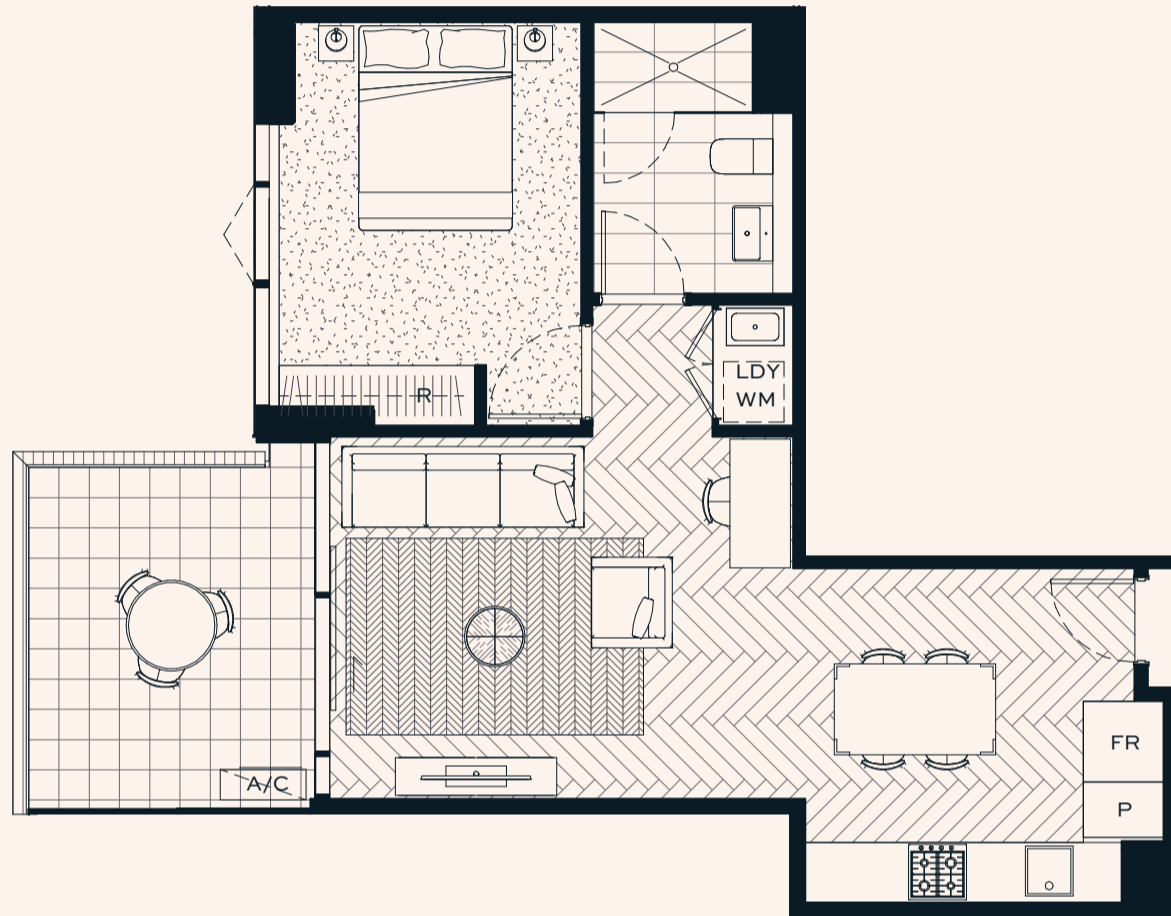


**6<sup>th</sup> MAB**

Please note that this floor plan is a guide only and was prepared prior to completion of the development. The information contained in this floor plan is believed to be correct at the time of preparation but is not guaranteed. Changes may be made during development and the floor plan is subject to change without notice at any time in accordance with the provisions of the Contract.

DOCKLANDS DR





# 1 BED 1 BATH

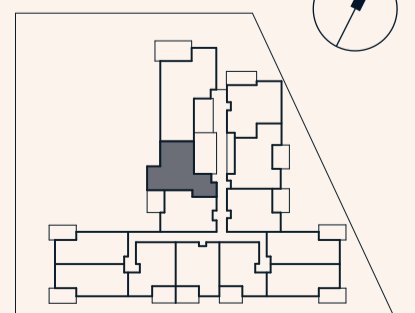
INTERNAL:	53.5M <sup>2</sup>
EXTERNAL:	10.8M <sup>2</sup>
<b>TOTAL:</b>	<b>64.3M<sup>2</sup></b>

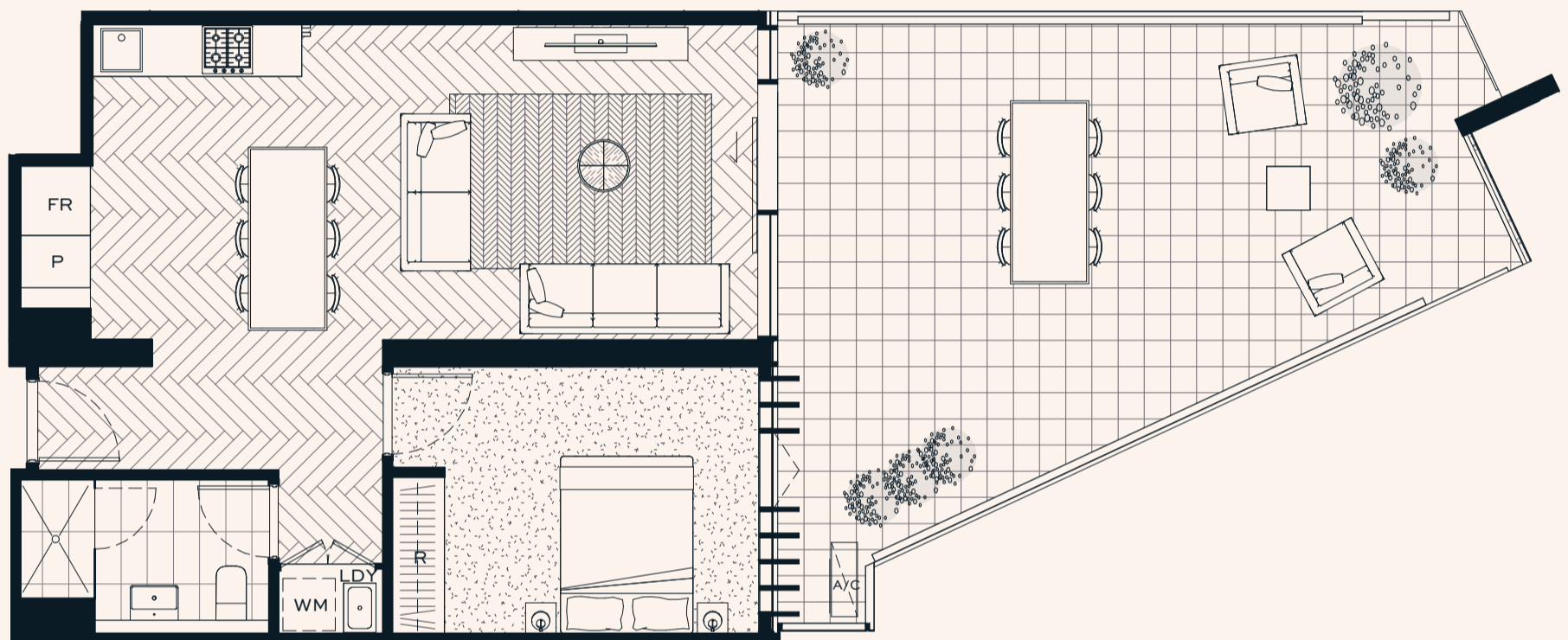


**6<sup>th</sup> MAB**

Please note that this floor plan is a guide only and was prepared prior to completion of the development. The information contained in this floor plan is believed to be correct at the time of preparation but is not guaranteed. Changes may be made during development and the floor plan is subject to change without notice at any time in accordance with the provisions of the Contract.

DOCKLANDS DR





# 1 BED 1 BATH

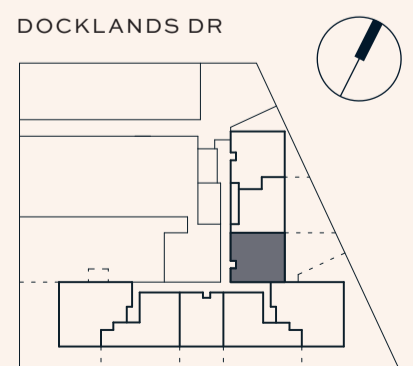
INTERNAL:	62.0M <sup>2</sup>
EXTERNAL:	41.4M <sup>2</sup>
<b>TOTAL:</b>	<b>103.4M<sup>2</sup></b>



**6<sup>th</sup> MAB**

Please note that this floor plan is a guide only and was prepared prior to completion of the development. The information contained in this floor plan is believed to be correct at the time of preparation but is not guaranteed. Changes may be made during development and the floor plan is subject to change without notice at any time in accordance with the provisions of the Contract.

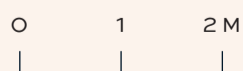
DOCKLANDS DR





# 3 BED 2 BATH

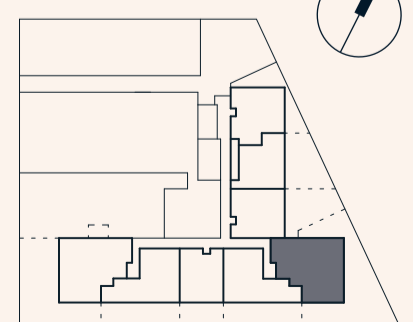
INTERNAL:	104.0M <sup>2</sup>
EXTERNAL:	119.0M <sup>2</sup>
<b>TOTAL:</b>	<b>223.0M<sup>2</sup></b>

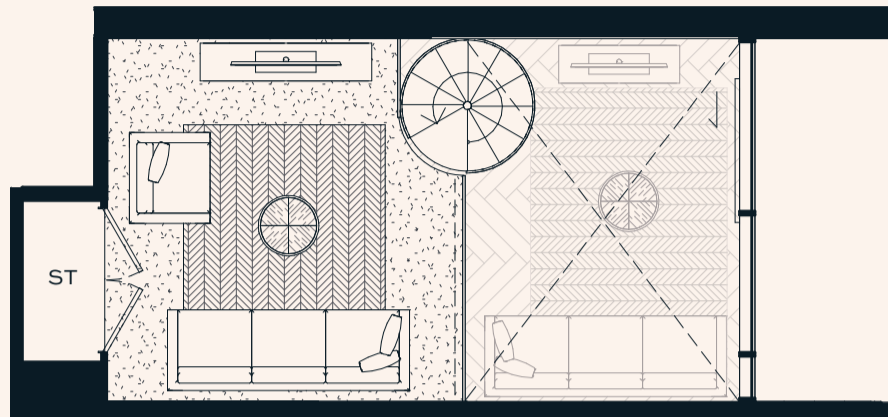


**6" MAB**

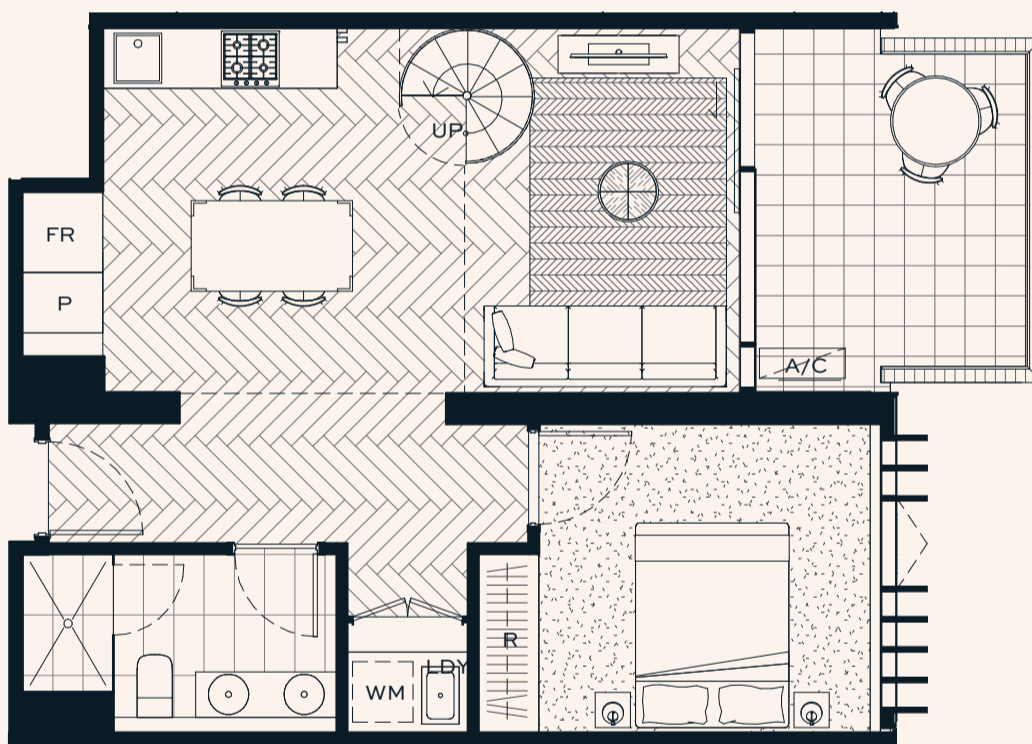
Please note that this floor plan is a guide only and was prepared prior to completion of the development. The information contained in this floor plan is believed to be correct at the time of preparation but is not guaranteed. Changes may be made during development and the floor plan is subject to change without notice at any time in accordance with the provisions of the Contract.

DOCKLANDS DR





MEZZANINE LEVEL 14.9M<sup>2</sup>



LOWER LEVEL 56.4M<sup>2</sup>

# 1 BED 1 BATH

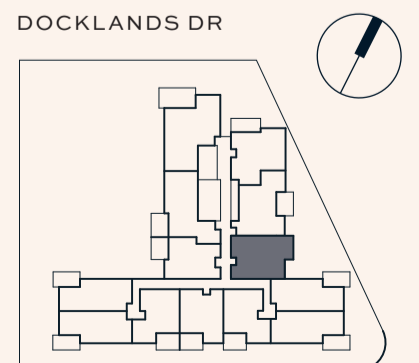
INTERNAL:	71.3M <sup>2</sup>
EXTERNAL:	10.2M <sup>2</sup>
<b>TOTAL:</b>	<b>81.5M<sup>2</sup></b>

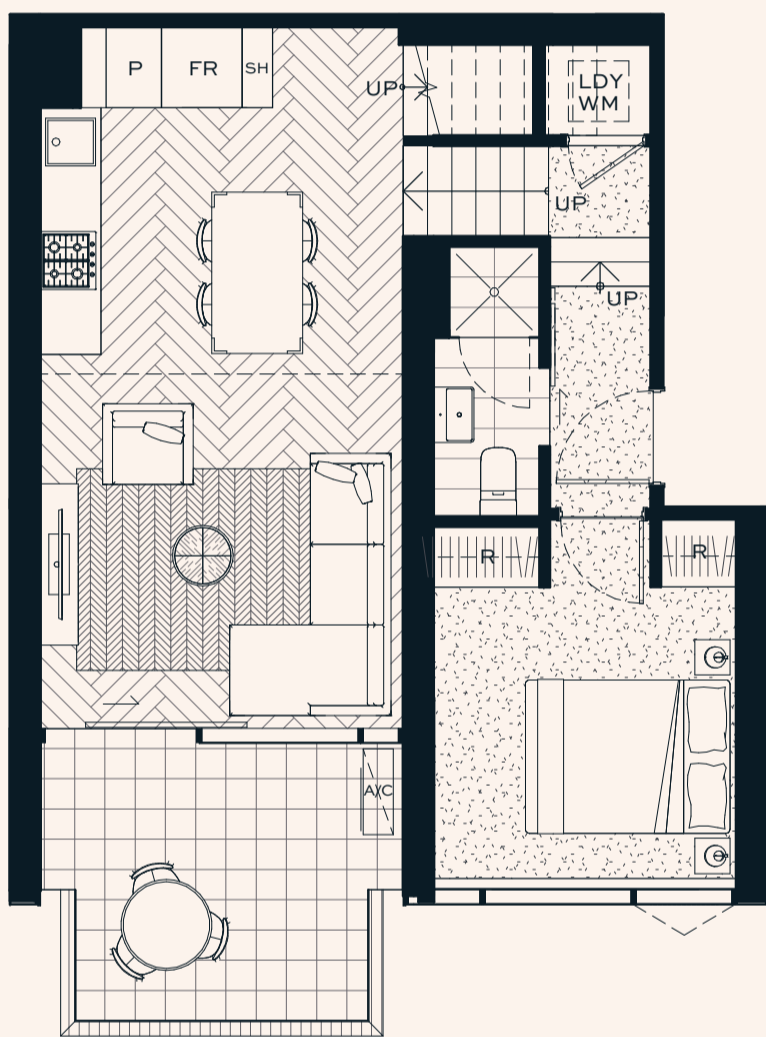


**6<sup>th</sup> MAB**

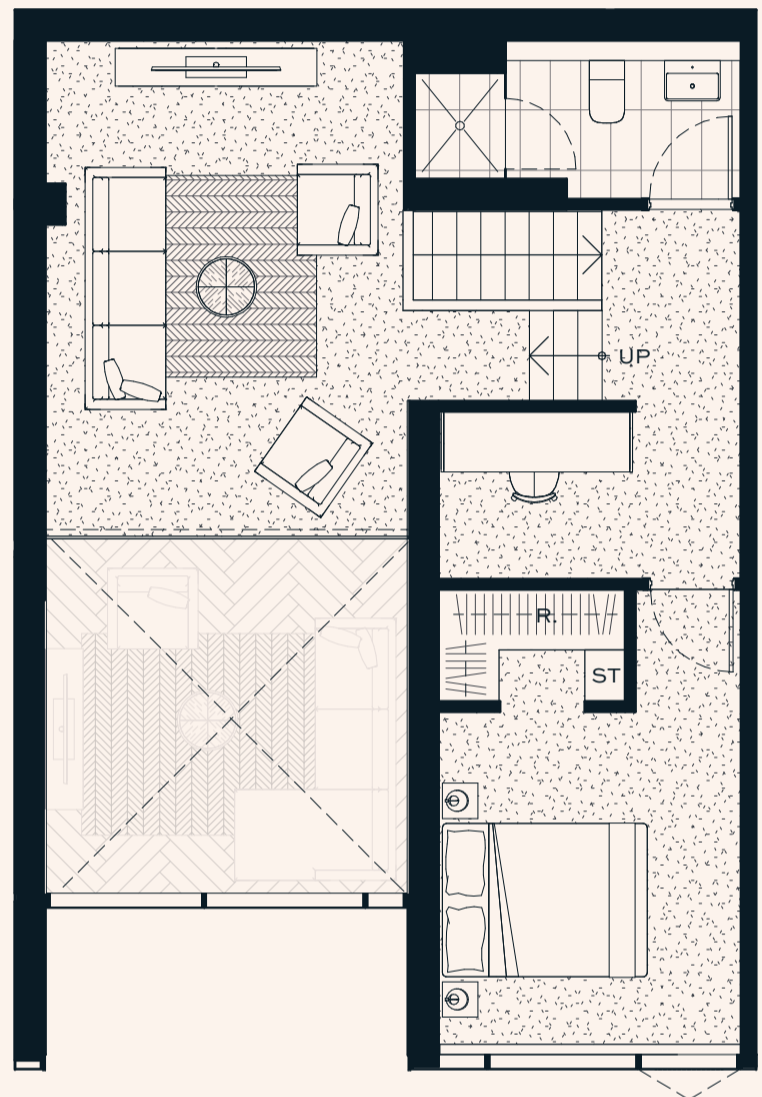
Please note that this floor plan is a guide only and was prepared prior to completion of the development. The information contained in this floor plan is believed to be correct at the time of preparation but is not guaranteed. Changes may be made during development and the floor plan is subject to change without notice at any time in accordance with the provisions of the Contract.

DOCKLANDS DR





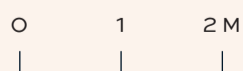
LOWER LEVEL 53.5M<sup>2</sup>



MEZZANINE LEVEL & UPPER LEVEL 53.1M<sup>2</sup>

## 2 BED 2 BATH

INTERNAL:	106.6M <sup>2</sup>
EXTERNAL:	10.1M <sup>2</sup>
<b>TOTAL:</b>	<b>116.7M<sup>2</sup></b>



**6<sup>th</sup> MAB**

Please note that this floor plan is a guide only and was prepared prior to completion of the development. The information contained in this floor plan is believed to be correct at the time of preparation but is not guaranteed. Changes may be made during development and the floor plan is subject to change without notice at any time in accordance with the provisions of the Contract.

DOCKLANDS DR

